

# TAYAMA® Electric Lunch Box EHB-01



All pictures shown are for illustration purpose only.  
Actual product may vary due to product enhancement.

## Product Specification

Model No.	Voltage	Power
EHB-01	110V	40W

Save These Instructions - For Household Use Only

Tayama Appliance USA Inc.  
www.tayama-usa.com

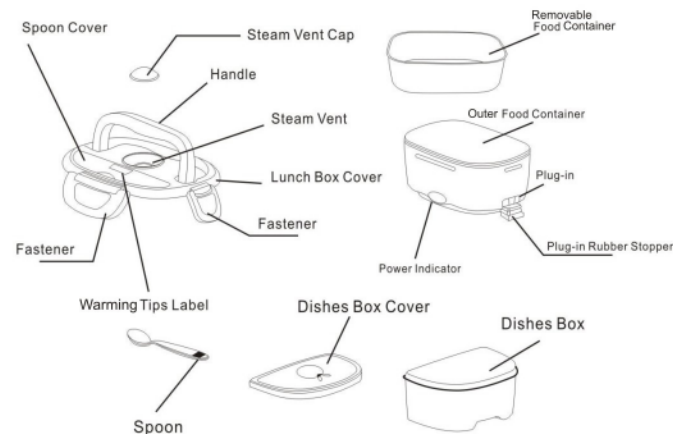
## Before You Begin

Thank you for purchasing our Tayama® Electric Lunch Box. It is very important that you read this entire manual, ensuring that you are totally familiar with its operation and precautions.

## Product Introduction

Our Tayama® Electric Lunch Box is useful, easy to operate, and convenient for taking food on the go anywhere. Packing your meals is a healthier and less expensive alternative to eating out during your lunch break or in between classes, etc.

## Product Structure



## How To Use

### (A) Heating food

1. Please put the cooked food into the removable food containers. Place the containers of food into the lunch box.
2. Put the lunch box cover on and lock fasteners downwards.
3. Open the steam vent cap and connect the power cord.
4. The power indicator light will turn on, power is on and heating!

Attention: Heating time varies depending on the temperature of the food and environment.

- (1) Heating meals under 25°C / 77°F (has not been refrigerated) takes about 25-30 minutes.
- (2) When temperature is lower and food containers have been refrigerated, heating time should be extended longer.
- (3) Unplug the power cord before starting to eat.

### (B) Heating soup

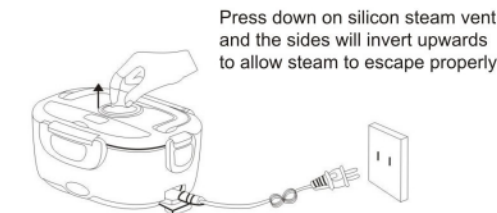
1. Please put the cooked soup into the removable food containers. Place the containers of soup into the lunch box.
2. Put the lunch box cover on and lock fasteners downwards.
3. Open the steam vent cap and connect the power cord.
4. The power indicator light will turn on, power is on and heating!

Attention: Heating time varies depending on the temperature of the food and environment.

- (1) Heating meals under 25°C / 77°F (has not been refrigerated) takes about 25-30 minutes.
- (2) When temperature is lower and food containers have been refrigerated, heating time should be extended longer.
- (3) Unplug the power cord before starting to eat.

## Special Safety Cautions

When using this product, first open the steam vent cover. If the steam vent cover is not open, the steam pressure will become stronger and will damage the product and cause parts to deform.



## Warming Tips

If the cooked food has been set aside for a long period, it is suggested to add some water into the rice and then plug into the outlet to heat so the rice would become softer and retain more moisture.

## Product Features

1. Energy efficient, portable and easy to use.
2. Special heating element allows food to be warmed evenly.
3. Safety conceal PTC thermostatic heating element.
4. Removable food containers with lid cover
5. The interior food containers are made of imported heat resistant, durable material which corresponds with safety standards of ROHS and FDA.

## Cleaning & Maintenance

1. Always unplug the power cord after using the lunch box.
2. Clean the lunch box and food containers after use in order to prevent odors and peculiar smell.
3. Cleaning the housing of the lunch box with a damp cloth. Never use abrasive cleaners. DO NOT immerse the main body in water.
4. To clean the removable food containers, soak in warm soapy water and use a soft cloth to wipe clean and dry parts.
5. Before storing away, clean and dry all parts and accessories and place product in a well ventilated dry location.
6. If this appliance begins to malfunction during use, immediately unplug the Cord. DO NOT USE or attempt to repair a malfunctioning appliance!

## Safety Precautions

1. Check to make sure the rated voltage is correct for usage.
2. If the power cord is damaged, contact an authorized repair center for assistance in obtaining a replacement power cord.
3. Do not use the lunch box near flammable objects.
4. Never plug in or remove plug with wet hands.
5. Never immerse the whole unit in water. May result in electric shock and damage to the lunch box.
6. Do not modify, remove or repair this product by yourself.
7. Do not use the lunch box in a wet area.
8. Do not disinfect the lunch box in a sterilizing cabinet.
9. Do not heat the lunch box in the microwave oven.
10. Do not place the lunch box in the refrigerator.
11. Do not turn on the lunch box when there is no food inside.

## Trouble Shooting

Fault	Cause	Solution
The indicator light is not on when plugged in	a. Power cord is not plugged in b. Power cord is damaged	Check the socket and power cord and plug in again
The indicator light is not on when plugged in	a. The heating element is damaged	Contact an authorized Repair Center for assistance
The temperature is very low after heating (food is not warm)	a. Heating time is too short b. Both the temperature of the environment and the food is too low	Extend the heating time

Helpful Tip: When using the lunch box, it is recommended to open and close the lid with both hands at the same time to ensure the fasteners are locked properly.



**WARNING:** Cancer and Reproductive Harm - www.P65Warnings.ca.gov