

# TAYAMA®

## USER MANUAL

### ELECTRIC THERMO POT BOILER & DISPENSER

#### Model No.: DSWB-320S



Thank you for purchasing this product.

Read all the information in this user manual before using the appliance.

Keep this manual in a handy location for future reference.

# IMPORTANT SAFEGUARDS

When using electrical appliances, basic safety precautions should always be followed including the following:

1. Read all instructions before use.
2. Do not touch hot surfaces. Use handles or knobs.
3. To protect against electrical shock, do not immerse cord or plug in water or other liquid.
4. Close supervision is necessary when any appliance is used by or near children.
5. Unplug from outlet when not in use and before cleaning. Allow to cool before putting on or taking off parts.
6. Do not operate any appliance with a damaged cord or plug or after the appliance malfunctions or has been damaged in any manner. Return appliance to the nearest authorized service facility for examination, repair, or adjustment.
7. The use of accessory attachments not recommended by the appliance manufacturer may cause injuries.
8. Do not use outdoors.
9. Do not let cord hang over edge of table or counter, or touch hot surfaces.
10. Do not place the water heater on or near a hot gas or electric burner, or in a heated oven.
11. Extreme caution must be used when moving an appliance containing hot oil or other hot liquids.
12. Always attach plug to the water heater first, then plug cord into the wall outlet.
13. To disconnect, please remove plug from wall outlet to turn "off" power.
14. Do not use this appliance for other than intended use.
15. Do not dispense hot water while the water is being boiled.
16. Never fill water beyond the "FULL" mark in the inner Pot or below the "REFILL" mark on the water level indicator, otherwise it will spill over or dry-up during boiling.
17. Do not open the top lid when water is boiling to avoid scalding by hot steam.
18. Do not boil anything other than water.
19. Do not plug in or unplug with wet hands, this is to avoid electric shock or injury.
20. Do not block the steam vent with a cleaning cloth or other items, this is to avoid scalds due to hot water spillage or deformation of the lid.

# SAVE THESE INSTRUCTIONS

Servicing should be performed by an authorized service representative.

This water boiler is intended for household use.

A short power supply cord is provided to reduce the risk of becoming entangled in or tripping over a longer cord. Longer detachable power supply cords or extension cords are available and may be used if care is exercised in their use. If longer detachable power supply cords or extension cords are to be used:

- (1) the marked electrical rating of the extension cord should be at least as great as the electrical rating of the appliance;
- (2) If the appliance is the grounded type, the extension cord should be a grounding-type 3-wire cord; and (3) the cord should be arranged so that it will not drape over the countertop or tabletop where it can be pulled down by children or tripped over accidentally.

The following instructions are applicable to 120V only:

This appliance has a polarized plug (one blade is wider than the other).

To reduce the risk of electrical shock, this plug is intended to fit into a polarized outlet in only one way. If the plug does not fit fully into the outlet, reverse the plug. If it still does not fit, contact a qualified electrician.

Do not attempt to defeat this safety feature.

The appliance is not intended for use by young children or disabled persons without supervision.

Ensure that young children do not play with the water heater.

# HOW TO USE

## Before First Use:

1. Read all the instructions and important safeguards.
2. Remove all packaging materials; check that all items are received in good condition.
3. Wash the stainless steel water tank with warm, soapy water using a sponge or dishcloth.
4. Rinse thoroughly to remove any soapy residue.
5. Wipe body and stainless steel inner lid clean with a damp cloth.
6. Add water to full water level and then bring up to a boil.
7. After water is boiled. Use electric dispense button to discard half of the hot water.
8. Unplug the power cord , remove the lid and discard the rest of the hot water.

## **⚠NOTE:**

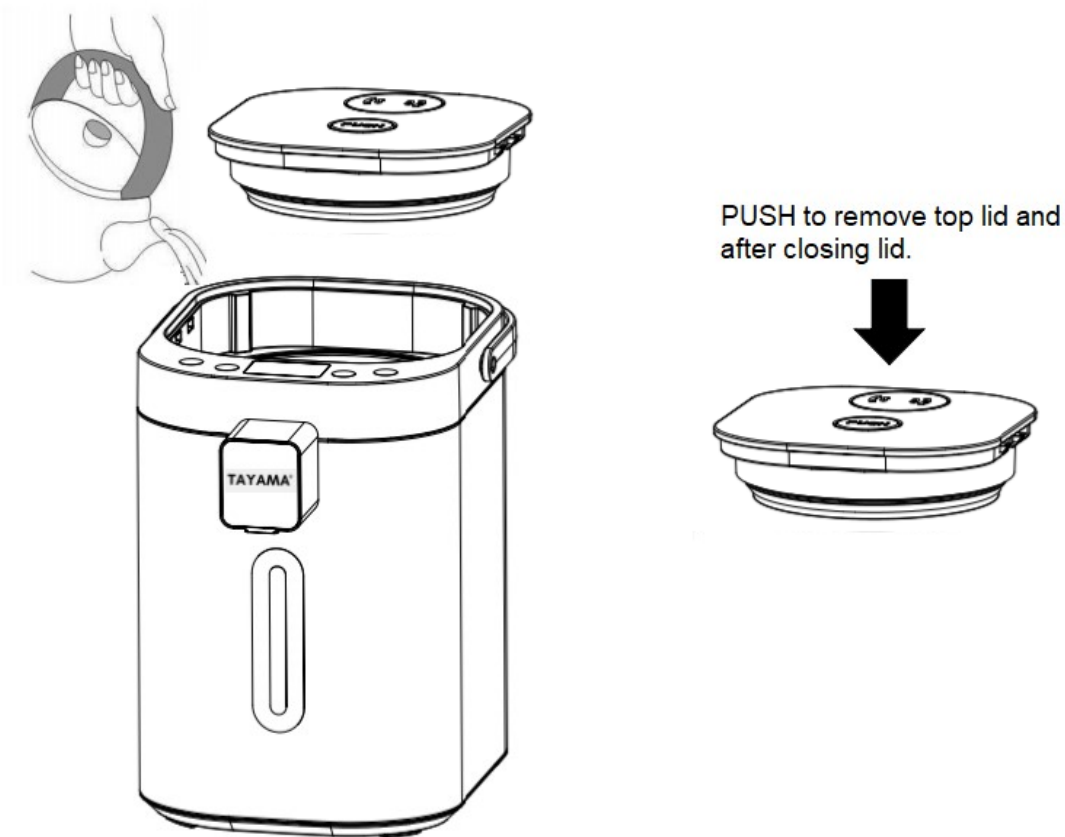
- Do not use abrasive cleaners or scouring pads.
- Do not immerse appliance, cord or plug in water at any time.

## **Open lid and fill with water:**

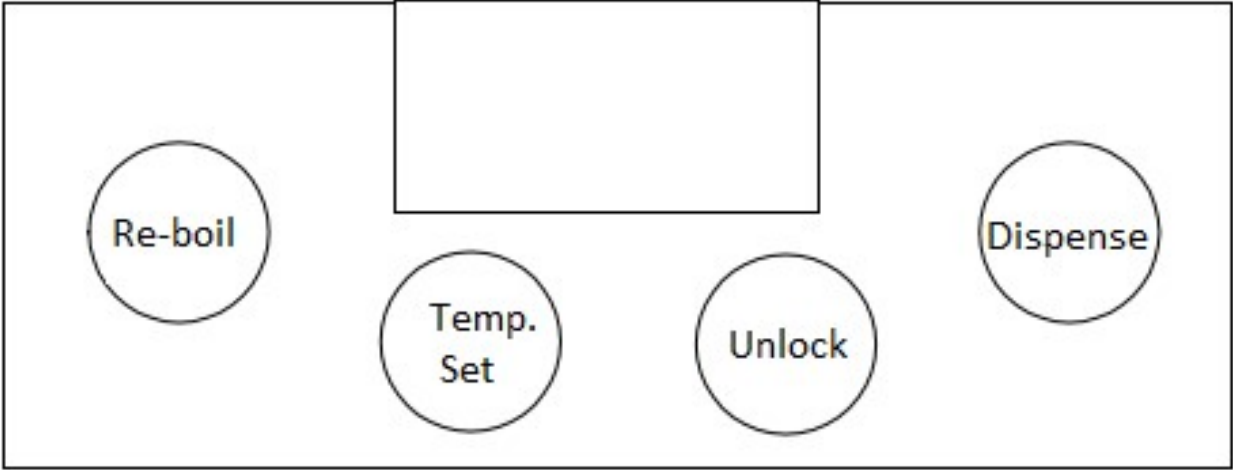
During the initial use or after a long period of storage, boil a full pot of water and discard. Please note that at initial use, there may be the smell of plastic, this is normal and odor will disappear.

- **To Open the Lid:** Press down on PUSH button on top of the lid, lever will raise to remove the lid.
- **To Close the Lid:** Align the top lid properly above the tank and press firmly down to secure the lid and press down the PUSH button.

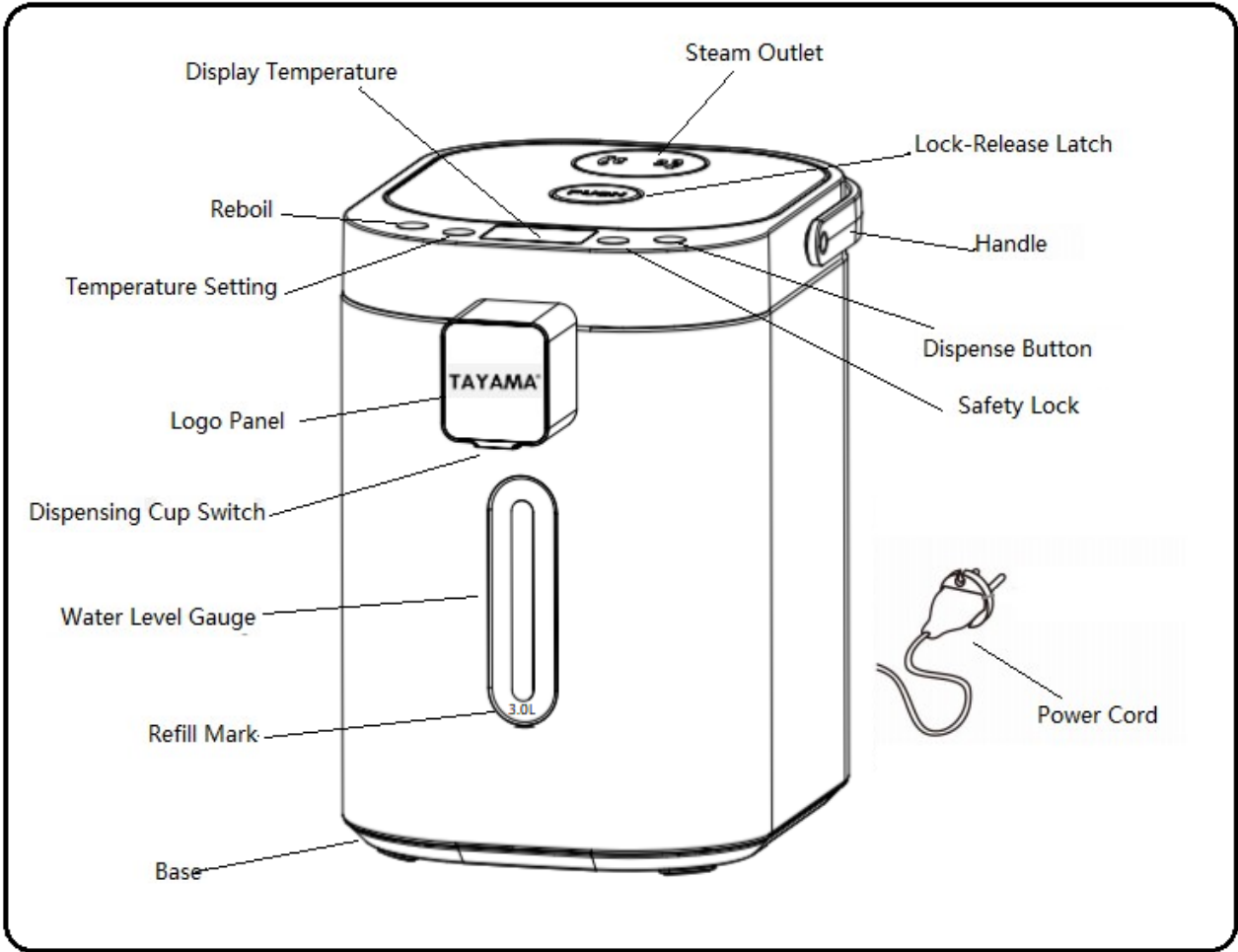
- Do not fill water directly under faucet to prevent wetting the control panel or power receptacle and causing malfunction.
- Use a separate container to fill the inner pot with water.
- Do not fill above the FULL line to avoid overflowing when boiling.
- Do not pour water onto the main body or control panel.
- Make sure there is water in the tank before plugging in the power cord.
- To turn off, unplug the power cord. There is no OFF button.



# CONTROL PANEL FUNCTIONS



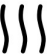

# PARTS IDENTIFICATION



## Boil Water:

1. Always plug power cord to the thermos pot first and then to the wall outlet. After power is switched ON, water will start to boil immediately.
  - Do not open top cover when water is boiling.
  - Do not add water when appliance is still boiling.
  - Do not obstruct the top lid steam vent.
2. LCD will display water temperature boiling to 212°F degree.
3. Keep warm will remain at 185°F degree default and temperature selection ranges 104-194°F degrees.

## Re-boil Function:


1. Press "Re-Boil" button once and indicator symbol will come ON. 
2. After Re-boil is completed, the Keep Warm indicator symbol will turn on. 

### NOTE:


- Re-boil will not work if there is insufficient water inside the tank, please add water.
- Pressing the Re-Boil button immediately after the water had just reached boiling level will have no effect as the water is already at 212°F.

# Dispense Function:

## 1. Auto Dispense Button

- a) Press the "Unlock" button once. The "Unlock" indicator symbol will come on. 
- b) Touch the "Dispense" button to dispense hot water.

## 2. Cup Water Dispense Outlet

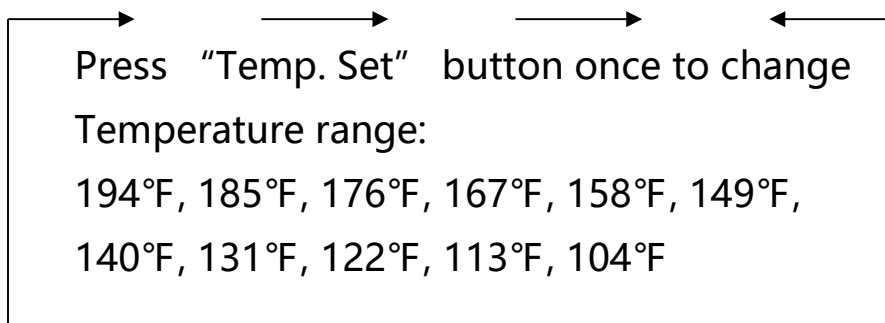
- a) Press the "Unlock" button once. The "Unlock" indicator symbol will come on. 
- b) Bring your cup up to the cup switch located below the dispense spout and gently press to dispense hot water.

### **△NOTE:**

- If the dispense button is not selected within 8 seconds after selecting the "Unlock" button, the appliance will automatically revert back to the safety LOCK position.
- The dispensing function will NOT operate if the electric thermo pot is not plugged in or has power ON.

# Temperature Setting:

Press the "Temp. Set" button to select your ideal temperature.





Default temperature setting is 185°F. After water temperature has finished boiling and reached selected temperature setting, Keep Warm mode will turn on and maintain set temperature.

Keep warm symbol will illuminate after boiling. If the water temperature is below the selected settings, water will be boiled again and boiling LED will illuminate. }}}

Temperature can be reset during Keep Warm. The device will RE-BOIL automatically according to the different hot water temperature settings.

**CAUTION:**

- Always keep the lid away from you as there is hot steam trapped under the lid.
- Do not press the dispensing button when the inner water reservoir is empty, damage may occur.
- You cannot dispense hot water by auto Dispense Button or the Cup Switch if the pot is unplugged.

# Temperature Setting Guide:

104°F	Warm water
113°F	Milk
122°F	Lemon water
140°F	Fruit tea
158°F	Ginger tea
185°F	Green tea or Coffee
194°F	Suitable for cooking hot instant food and for hot beverages such as hot chocolate
212°F	Re-Boil function

## Storage:

If you do not use the electric thermo pot for a long time, please:

1. Disconnect the power cord.
2. Pour out the water.
3. Dry the electric thermo pot thoroughly before storing away.

## Care and Cleaning:

Unplug, discard remaining hot water and wait until the unit cools down before cleaning can be started.

Only use clean soft materials such as cloth, sponge or paper towel.

1. Simply rinse thoroughly with water and wipe the inside liner with a clean sponge or paper towel.

- To prevent damage to the thermo pot, do not use alkaline cleaning agents when cleaning, use a soft cloth and a mild detergent.
  - Do not use any material such as a cleanser or scrubber for tough stains or mineral deposit; this is to avoid damage to the non-stick coating surface.
  - All water that contains minerals will leave mineral residue on the inside liner when boiled. If not cleaned for a prolonged period, mineral build up or stains may become tough or louder noises can be heard while boiling water. Frequent cleaning is recommended.
  - Mineral deposit will eventually block the pipes and/or the steam vent if not removed. This blockage will cause the motor unit to burn when the "Dispense" key is pressed persistently.
  - Do not scrub and/or do not use a knife to remove the mineral deposit.
  - Discoloration caused by boil-dry is not removable.
2. For mineral build up, use citric acid cleaner every 2-3 months.
- Uneven color discoloration of the inner container and floating white material in the water.

**NOTE:**

Red spots such as rust, milky white discoloration, black spots, iridescence that appear in the inner container, and floating white material are caused by a reaction of the minerals (calcium, magnesium, iron, etc.) contained in the water. This is not discoloration, rust, or peeling of the fluoropolymer-coated surface of the inner container itself. Although there are no sanitary / health concerns, frequent cleaning is recommended when the pot starts to show stains.

3. Wipe off stains with a damp cloth or paper towel.
4. Never use any chemical or abrasive solution or cleaning materials to clean your electric thermo pot.

5. The exterior surfaces should also be cleaned with a soft damp cloth. No chemicals are needed.
6. Do not immerse the unit in water or wet the operation panel.
7. Do not place the unit upside down to dry it.

**NOTE:**

If alkaline water is used, lime stain may stick to the inner pot. Cleaning must be done regularly. Continued usage may result in the stain becoming difficult to remove.

**DO NOT USED THE FOLLOWING ITEMS:**

- Volatile oil or thinner.
- Abrasive cleaning powder, nylon brushes etc.
- The electric air pot is NOT dishwasher safe.

**STORAGE:**

- Dry it thoroughly before prolonged storage.

## Specification:

MODEL NO	DSWB-320S
RATED VOLTAGE	110-120V
RATED POWER	680W
FREQUENCY	60Hz
CAPACITY	3.0L

**THIS APPLIANCE IS STRICTLY FOR HOUSEHOLD AND INDOOR USE ONLY.**

**TAYAMA<sup>®</sup>**

Tayama Appliance USA Inc.

[www.tayama-usa.com](http://www.tayama-usa.com)